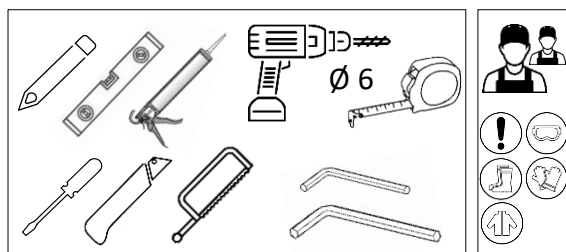


# VERONICA BLACK

## Dušas kabīnes montāžas instrukcija

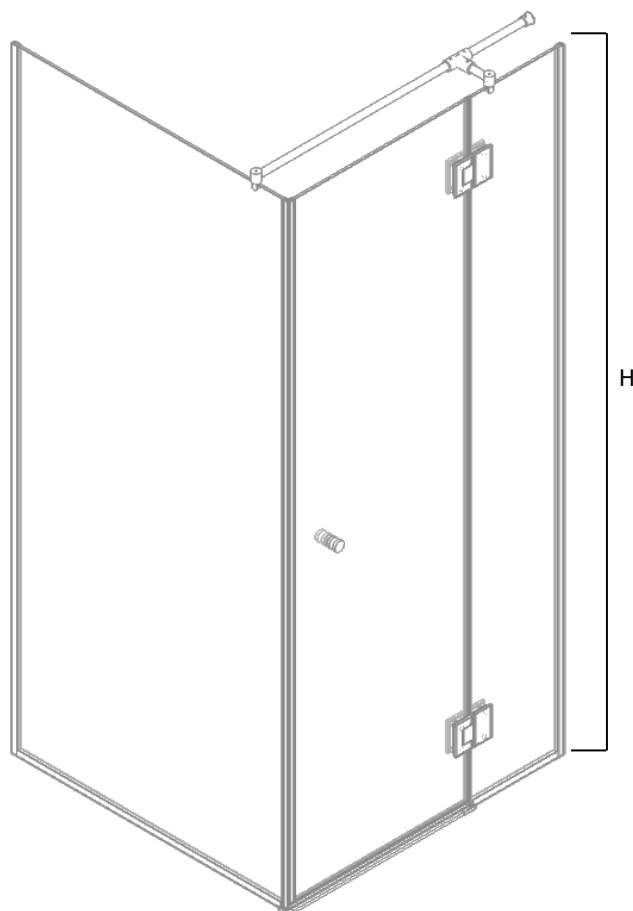
Инструкция по монтажу душевой кабины

Shower enclosure installation assembly



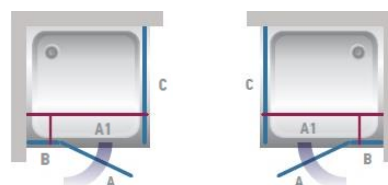
1.		PAL-01	2
2.		PAL-01B	1
3.		PAL-01B_2	1
4.		DZT1000CHR	1
5.		MF-42/8-ER	1
6.		R1653308	1
7.		400211PS-013	1
8.		OSH-OFS2CP	2
9.		DR-CH32	1
10.		SC-ALU8X9NEW	1
11.		SC-SL-UZL180R/L	1
12.		SC-SL-UZL90L/R	1
13.		3,5x35 SK1SET; Ø 6	2
14.		8 mm Safety Glass	1
15.		8 mm Safety Glass	1
16.		8 mm Safety Glass	1

VERONICA BLACK	A + B (mm)	C (mm)	H (mm)
80X80VER_B	794-800	787-792	1988
90X90VER_B	894-900	887-892	1988
100X100VER_B	994-1000	987-992	1988
110X110VER_B	1094-1100	1087-1092	1988
120X120VER_B	1194-1200	1187-1192	1988
120X80VER_B	1194-1200	787-792	1988
120X90VER_B	1194-1200	887-892	1988

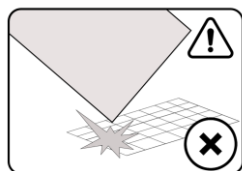
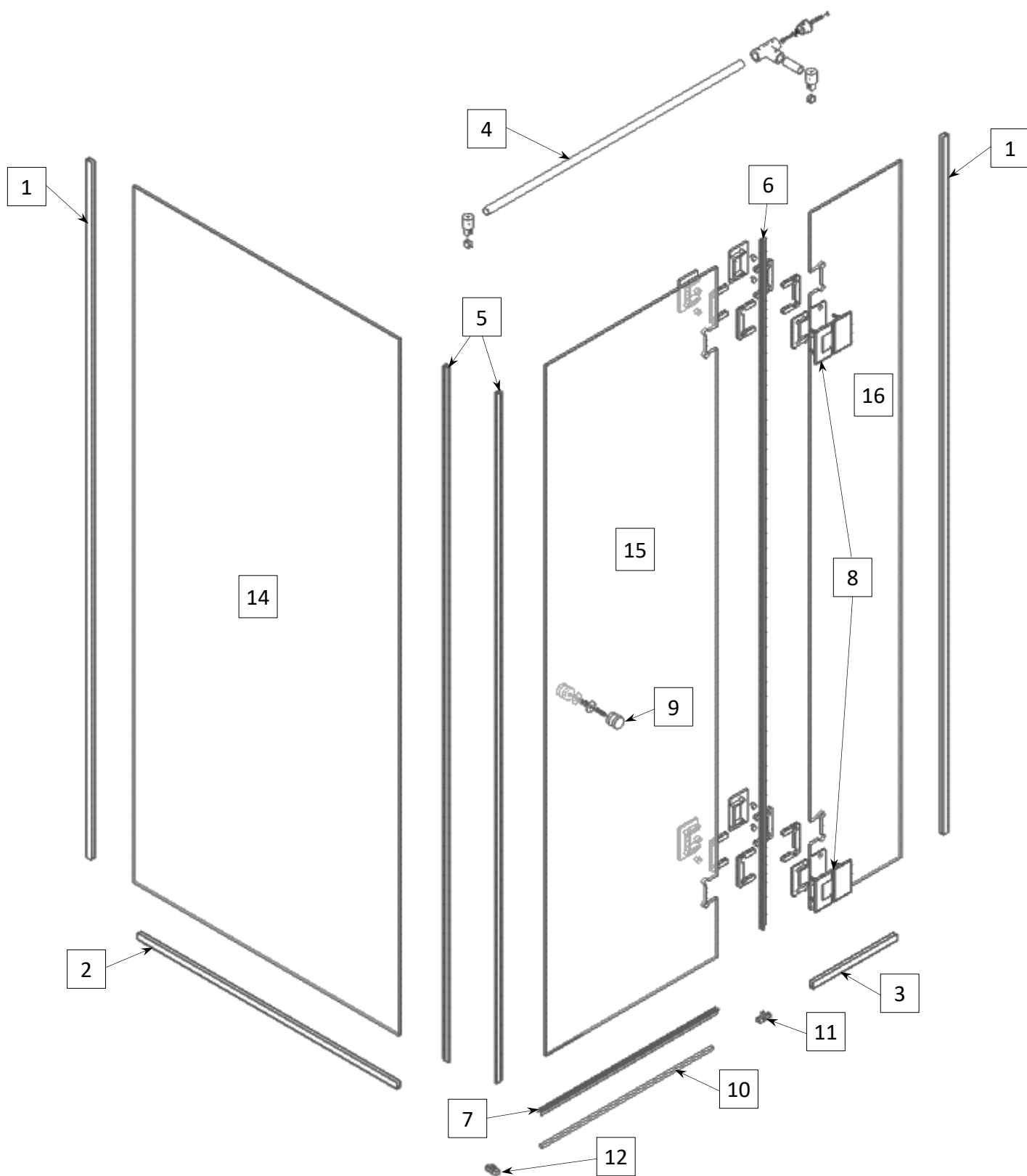


LEFT

RIGHT



# VERONICA BLACK



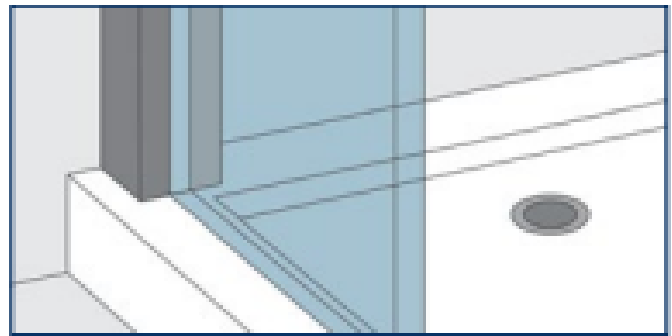
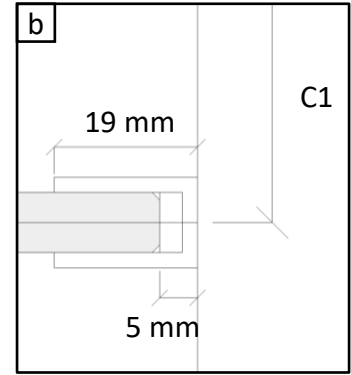
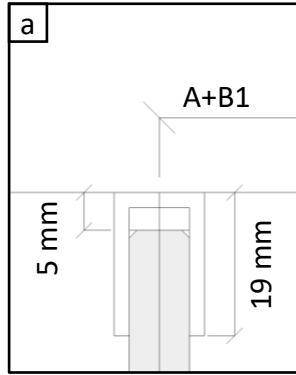
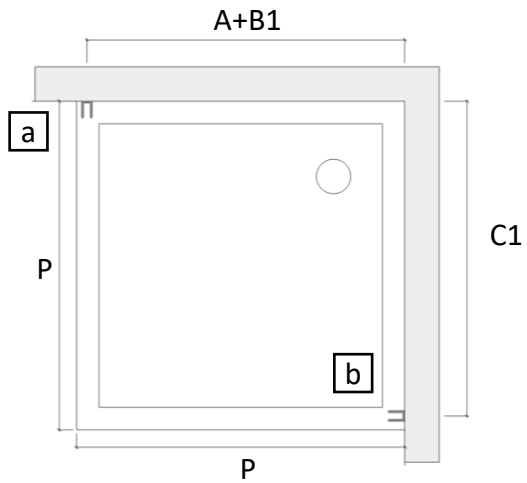
**Uzmanību!** Rūdīts stikls- rīkojieties uzmanīgi. Aizsargājiet stikla stūrus pret triecieniem.

**Внимание!** Закаленное стекло – будьте осторожны. Защищайте углы стекла от ударов.

**Attention!** Tempered glass - proceed with care. Protect the corners of the glass from impact.

### 1.A

VERONICA	P, mm	A+B1	C1, mm
80X80VER	800 x 800	788	783
90X90VER	900 x 900	888	883
100X100VER	1000 x 1000	988	983
110X110VER	1100 x 1100	1088	1083
120X120VER	1200 x 1200	1188	1183
120X80VER	1200 x 800	1188	1183
120X90VER	1200 x 900	1188	1183



### 1.B

VERONICA	D	S
80X80VER	800	800
90X90VER	900	900
100X100VER	1000	1000
110X110VER	1100	1100
120X120VER	1200	1200
120X80VER	1200	800
120X90VER	1200	900

